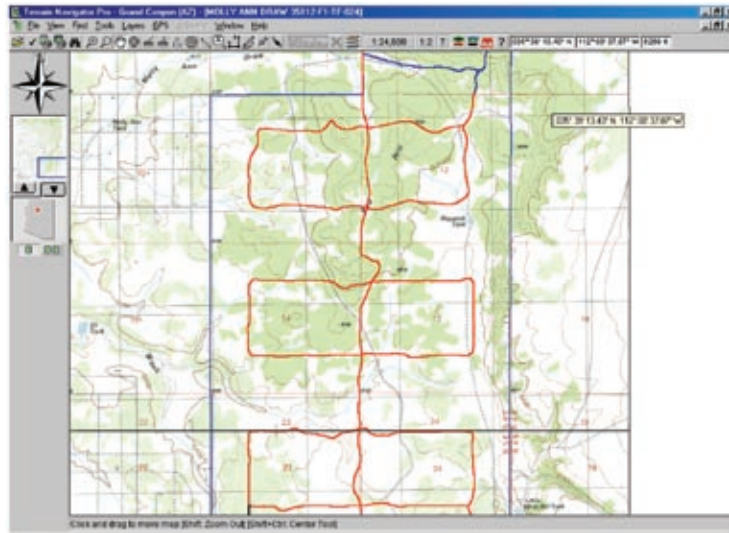


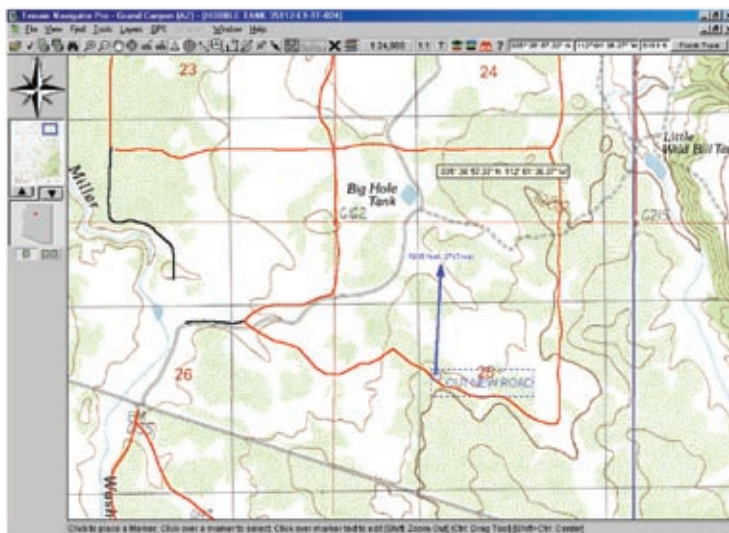
# Uses of Terrain Navigator *By Martin H. Martin, LS*

Primarily I use Terrain Navigator in conjunction with Pocket Navigator on my Ipaq 3955. I have mounting brackets on both my truck and my ATC's for the Ipaq and use it extensively to navigate to corners I am looking for. The ability to have the unit track as I go along is invaluable in locating new roads that may not show on the quad maps.

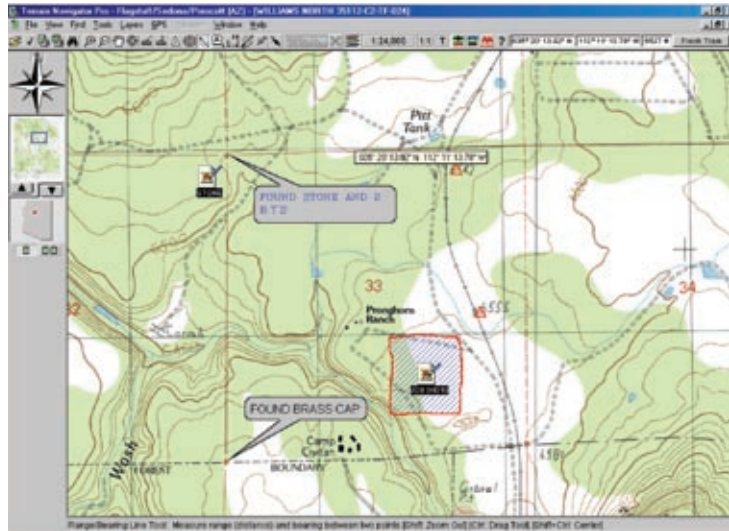
The second most useful feature is the tie to the NGS database records. Being able to search a new area for NGS monuments has helped tremendously when working on the nearby Navajo Indian Reservation. I can center the map on the project area and just click on the nearby reference points to see if they will work for our control points.



In the above screen, we have used Pocket Navigator to locate roads cut prior to creation of a 40 acre parcel subdivision. With this , we can see if there are any areas that need additional roads to be created prior to our final location with RTK equipment.



In this screen we show where we would like a new road to be cut. We can then flag this line using Pocket Navigator. We use different colors to show whether the roads have been graded or just bulldozed.



*In the above map, I have noted what we have found at various points, have a georeferenced point at the northwest corner with a link to a picture of the found stone, and a hatched area showing the general boundary of the parcel to be surveyed with a link to the Autocad Drawing.*

During the initial review period for a parcel of land a client was looking at, we used Terrain Navigator Pro on a laptop hooked to an external GPS unit to show in real-time, where on the subject property we were located, as we drove around. It was invaluable for the client to see what views were available and the terrain cover as we were driving through the project.

Overall, Terrain Navigator Pro has made it very ease to do the initial reconnaissance for larger projects. I am able to navigate to my corner search areas, locate roads as we drive along, and use it as a planning tool for the larger parcels we survey.

*Martin H. Martin, LS  
3528 N. Walker  
Flagstaff, AZ 86004  
928-526-0270  
mlsinc@safeaccess.com*



*Martin has been licensed in Arizona since 1985 and owns Martin Land Surveys, Inc. in Flagstaff, AZ*